



**102**

3000m +

**AC/VFD - Range III Single**

**Mast**

RA Hodgson Hydraulic  
Telescopic Single  
Static Hook Load: 133,800 daN  
Racking: N/A

**Substructure**

RA Hodgson Step Down/Elevating Floor  
One Piece Step Down w/ Hyd Leveling  
Setback Capacity: N/A  
Casing Capacity: 133,000 daN  
KB to Ground: 4.38m  
Clear Working Hight: 3.86 m

**Drawworks**

IDL 8300AC Drive Single Drum (800 hp / 597 kW)  
Input: GE GEB 22D (1150 hp / 858 kW)

**Mud Pump #1 (Triplex)**

F-1300  
Rated: 1300 hp / 969 kW  
Input: GE GEB 22D (1150 hp / 858 kW)

**Mud Pump #2 (Triplex) optional**

F-1000  
Rated: 1000 hp / 746 kW  
Input: 12V2000 1050 hp / 746 kW

**Mud System**

Circulation System: 35 MPa / 5000 psi  
1 Tank w/ 5 Compartments: 75 m3  
Shakers: (2x) Derrick: FLC-514 Linear Motion

**Top Drive**

FDS: 1570 c/w Integrated Split Blocks - 150T  
Rating: 133,000 daN

**Catwalk**

Fully Automated Hyd RIII  
Hydraulic Skate

**Traveling Assembly**

Block: Intergrated FDS Split, Block/Becket  
Rated: 133,000 daN  
Swivel: Intergrated with Top Drive

**Table**

IDL (520 mm / 20.5 ")  
Power Air Slips  
Iron Roughneck TM-120

**Generator / Light Plant**

Rated: 685 hp / 440 kW  
Input: Detroit 60 Series (685 hp / 440 kW)  
Rated: 685 hp / 440 kW  
Input: Detroit 60 Series (685 hp / 440 kW)  
Rated: 685 hp / 440 kW  
Input: Detroit 60 Series (685 hp / 440 kW)

**Well Control**

BOP: (2) Townsend T88 Single Gate (9" x 3000 psi)

Choke manifold: (35 MPa / 5000 psi)  
- Size 79mm

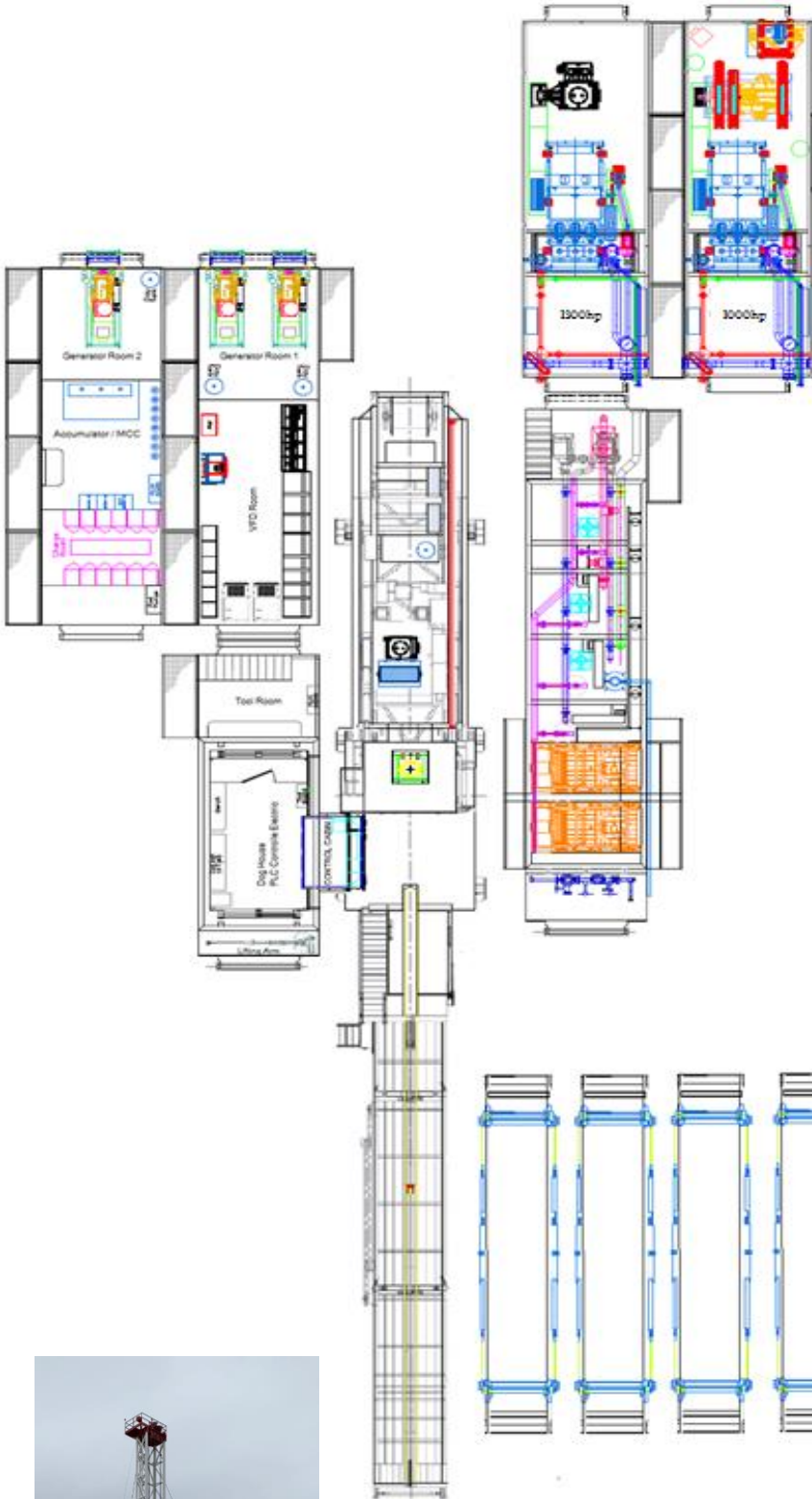
Accumulator: 5 Station (416 L / 110 G) Wireless  
Mud Gas Separator: (914 mm / 36 ")

**Boiler**

(125 hp)

**Tubulars**

Drill Pipe: 101.6 mm / 4 " FH - 222JT RIII  
Drill Collars: 159mm / 6.25 " FH - 8JT



Riq Load  
Load Count

11  
14